



FOR IMMEDIATE RELEASE

December 15, 2023

T Galleria by DFS, Okinawa Launched Permanent Exhibition of "teamLab Future Park" with Grand Unveiling on December 15



Photo 1: teamLab [Graffiti Nature - High Mountains and Deep Valleys, Red List](#)® teamLab (Click [here](#) to download high resolution photo)

(OKINAWA, JAPAN) DFS Group, the world's leading luxury travel retailer, is pleased to announce the launch of permanent, exclusive exhibition of "[teamLab Future Park Okinawa](#)" on the third floor of T Galleria by DFS, Okinawa. The interactive digital art space opened on December 15, 2023.



Photo 2: (From left to right) Distinguished guests, Richard Gustafson, Managing Director, Japan, Midpac, DFS Group, Hiroki Matori, Senior Executive Director, Okinawa Convention and Visitor's Bureau, Mutsuko Kawakami, Chief Councillor and Deputy Director, Okinawa Prefecture, Vinay Lamba, President Asia Pacific & US, DFS Group, Genta Koja, Deputy Mayor of Naha City and Akitae Matsumoto, Managing Director, teamLab Integrate Inc., gathered together for a ribbon cutting ceremony to commemorate the opening of this exclusive new attraction. (Click [here](#) to download high resolution photo)

DFS consistently pushes the boundaries of experiential retail innovation, collaborating with renowned brands and innovative partners throughout its longstanding history.

“We're thrilled to announce the opening of teamLab's first permanent interactive art installation in Okinawa on the 3rd floor of T Galleria Okinawa. Over the past three years, we've worked hard to seamlessly integrate luxury shopping with cutting-edge digital technology. Today, we stand honoured to present this unique interactive art destination. Our goal is to enhance Okinawa's appeal as a tourist destination, and our dedicated team is committed to creating unforgettable memories for all our visitors,” said Richard Gustafson, Managing Director, Japan, Midpac, DFS Group.

DFS Okinawa's “teamLab Future Park, Okinawa” is based on the concept of “co-creation,” where visitors enjoy the freedom to create their own world with others. Through this groundbreaking partnership with digital art innovator teamLab, DFS Okinawa establishes a new paradigm of destination retailtainment through an unmatched combination of shopping and sprawling interactive art.

In addition to teamLab's artwork [Animals of Flowers, Symbiotic Lives II - A Whole Year per Year](#), several installations will be exhibited from teamLab Future Park, educational project based on the concept of collaborative creation ('co-creation') where people can enjoy creating the world freely with others. These include [Graffiti Nature in a Beating Valley - Symbiotic Lives, A Whole Year per Year](#), [Red List](#), [Sketch Waterfall Droplets](#), [Little Drops Cause Large Movement](#), [Sketch Aquarium: Connected World](#), [Sliding through the Fruit Field](#), [Waterfall Droplets](#), [Flowing Down a Slope](#), [Light Ball Orchestra](#), [Hopscotch for Geniuses: Bounce on the Water](#), and more.



Photo 3: teamLab [Waterfall Droplets, Little Drops Cause Large Movement](#)® teamLab (Click [here](#) to download high resolution photo)



Photo 4: teamLab [Sliding through the Fruit Field](#)® teamLab (Click [here](#) to download high resolution photo)



Photo 5: teamLab [Sketch Aquarium: Connected World](#)® teamLab (Click [here](#) to download high resolution photo)

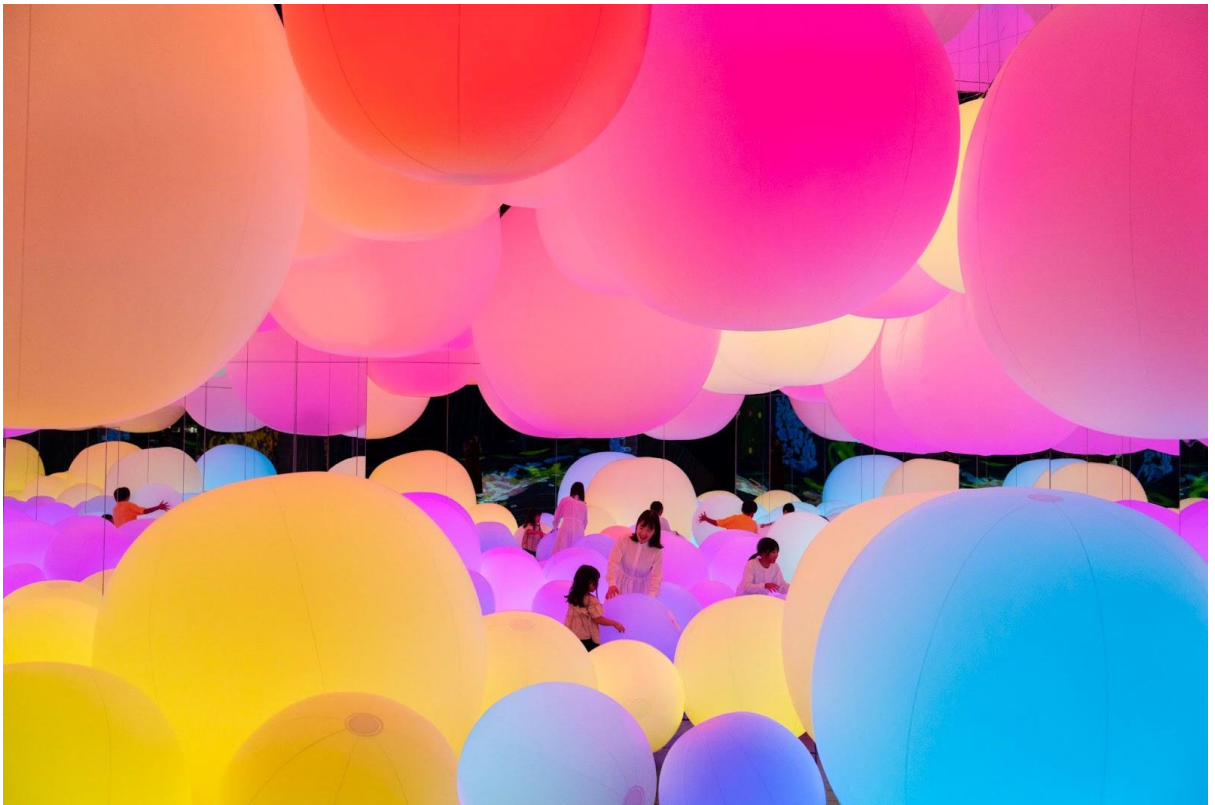


Photo 6: teamLab [Light Ball Orchestra](#)® teamLab (Click [here](#) to download high resolution photo)



Photo 7: teamLab [Hopscotch for Geniuses: Bounce on the Water](#)® teamLab (Click [here](#) to download high resolution photo)



Photo 8: teamLab [Animals of Flowers, Symbiotic Lives II](#)® teamLab (Click [here](#) to download high resolution photo)



Photo 9: teamLab [Story of the Time when Gods were Everywhere](#)® teamLab (Click [here](#) to download high resolution photo)



Photo 10a and 10b: At the teamLab [“Sketch Factory”](#)®, visitors can turn their own drawing into memorabilia to take home with them. The drawings created in “Graffiti Nature” or “Sketch Aquarium: Connected World” don’t just move around in the artwork space, they can be also made into a tin badge, towel and T-Shirt and other souvenirs. (Click [here](#) to download high resolution [photo 10a](#) and [Photo 10b](#))

“teamLab Future Park” is an exhibition that can be enjoyed by both children and adults. Since its first exhibition at the Ryubo department store in Okinawa in November 2013, it has been held in Sydney, Bangkok, Shanghai, Turin, Budapest, Jakarta, Johannesburg, and other cities around the world, with permanent exhibitions in Singapore, Dubai, Shenzhen, etc. To date, more than 15 million people around the world have experienced the exhibition.

Visit T Galleria by DFS, Okinawa for a splendid shopping experience where you can indulge yourself and your loved ones with the best curated selection of global luxury brands while exploring the world of art, science and technology via teamLab’s exhibitions.



For further information, please visit -

[T Galleria by DFS, Okinawa](#)
[“teamLab Future Park Okinawa”](#)
(4-1 Omoromachi, Okinawa)

Tickets are also available on Klook.
#teamLabOkinawa

Download press kit here.

DFS: Your Personal Guide To The World Of Luxury

DFS Group is the world's leading luxury travel retailer. Established in Hong Kong in 1960, DFS Group continues to be a pioneer in global luxury travel retail, offering its customers a carefully curated selection of exceptional products from over 750 of the most desired brands. Its network consists of 44 stores located in 15 major global airports and 21 downtown Galleria locations on four continents, as well as affiliate and resort locations. The Group is privately held and majority owned by the world's largest luxury conglomerate, Moët Hennessy Louis Vuitton (LVMH), alongside DFS co-founder and shareholder Robert Miller. DFS Group employs more than 6,000 people focused on creating inspiring omnichannel retail experiences for its customers and is headquartered in Hong Kong SAR with offices in Australia, China, France, Indonesia, Italy, Japan, Macau SAR, New Zealand, Singapore, United Arab Emirates, United States of America and Vietnam.

For more information, please visit www.dfs.com.

FOR FURTHER INFORMATION, PLEASE CONTACT:

DFS Group | Josephine Chiu | Josephine.chiu@dfs.com